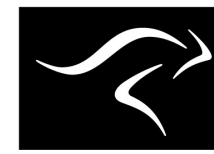
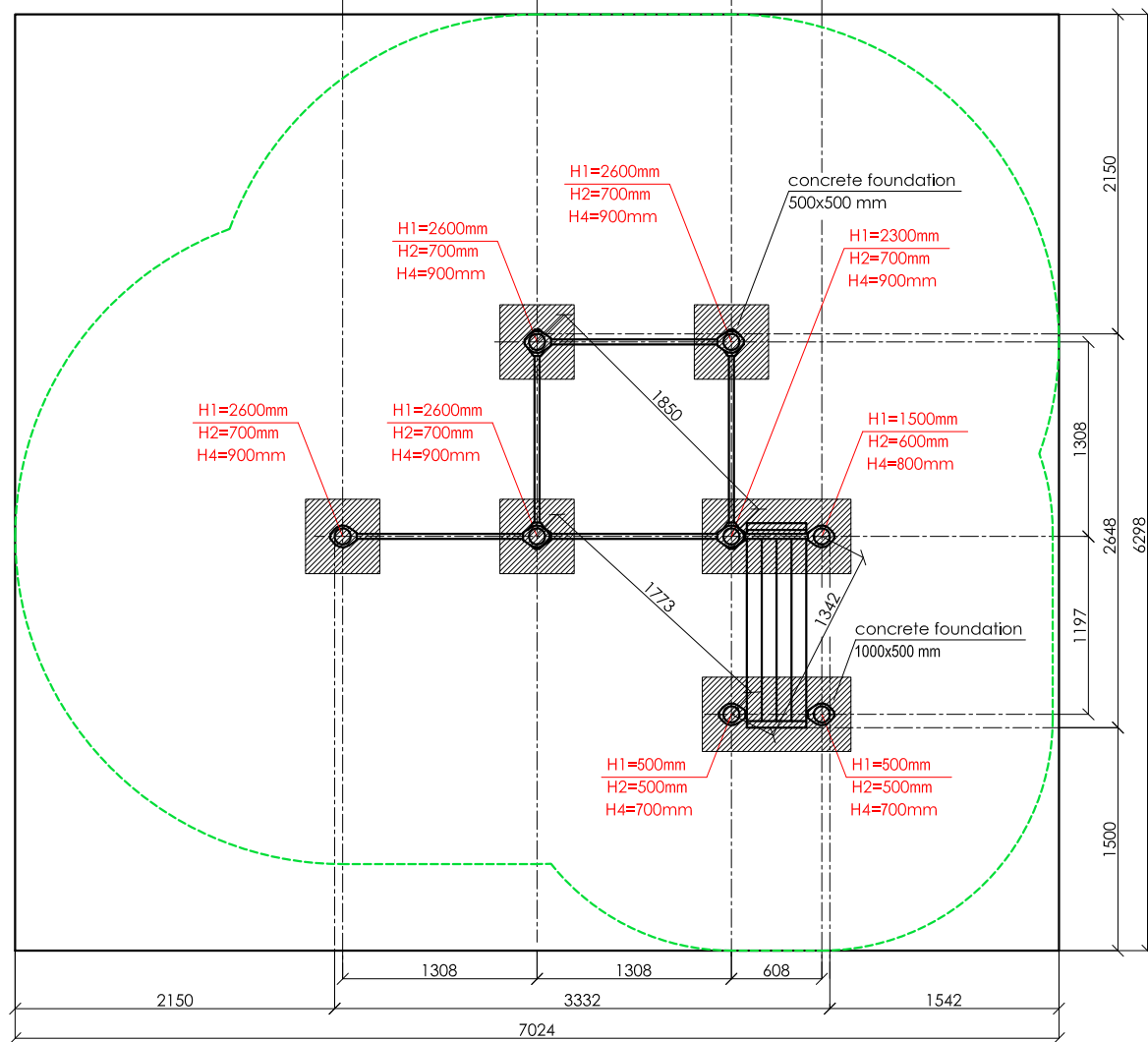
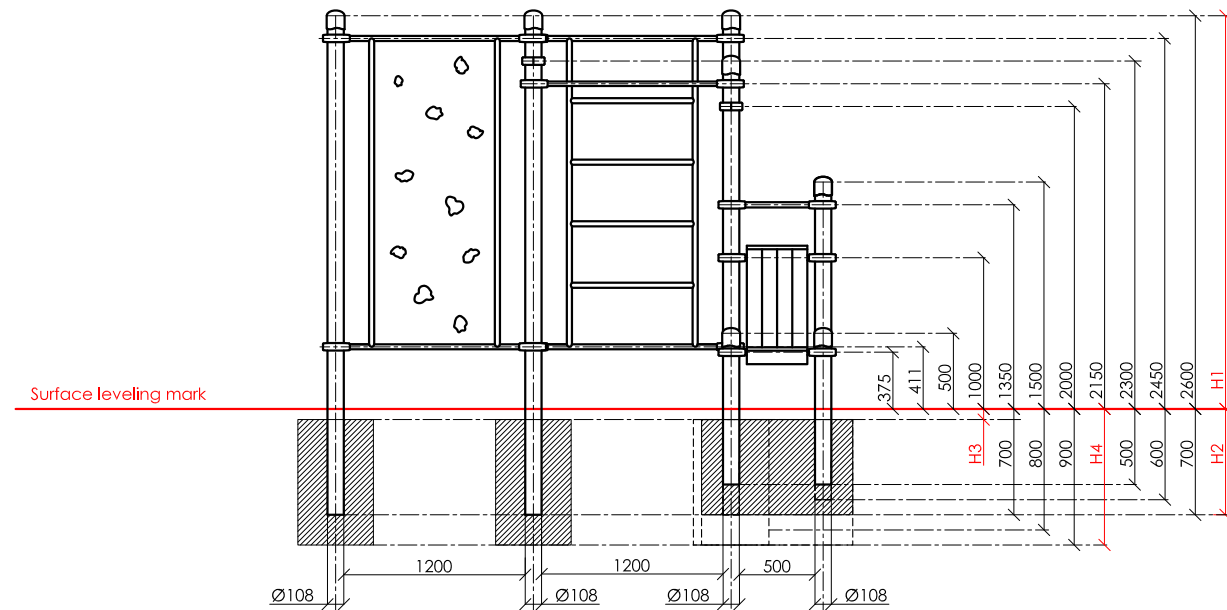
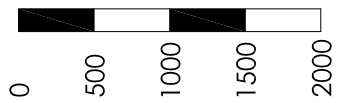


SCALE 1:50



**KENGURU PRO**

"KENGURU PRO" LTD

Address: Lauteres street 4, Riga, Latvia, LV-1002  
 VAT Reg. No. 40103750152  
 Bank: A/S Luminor bank, SWIFT: RIKOLV2X,  
 Bank Account: LV65RIKO0002930161161  
 e-mail: info@kengurupro.eu  
 www.kengurupro.eu

K-039

Kustur



The complex consists of eight vertical columns of different height, three crossbars 500 mm in length, three crossbars 1200 mm in length, Swedish wall, climbing wall and a composite material bench for abs. Height of the Swedish wall - 2073 mm. The distance between the crossbars of the Swedish wall - 407 mm. Height of the climbing wall - 2073 mm. Construction is secured together with siluminium clamps.  
 Weight 339,3 kg

Installation instructions:

- Choose a suitable underground for the unit (see page 2, table 2)!
- Prepare the construction pit with a drilling machine or other devices.
- Before pouring the concrete all structures elements must be leveled and fixed.
- Complex elements must be fixed and bolted together with metal clamps.
- Ready-made C25 concrete should be used.
- Crossbars installation height can be changed according to customer's wishes.
- Approximately 0,15m<sup>3</sup> concrete is needed for each spot foundation.
- Under the structures we recommend to install absorbing rubber cover.

The size of the hole for the foundation is depending on the consistency of the ground. The dimensions mentioned above are applicable for normal conditions with firm ground. If the ground is extremely soft, a much bigger foundation is needed. Use only appropriate material and follow the installation instructions closely!!!

Foundation plan and area of movement of the K-039 Kustur

Technical information

Foundation when using Shock absorbing underground (synthetic - rubber granulates)		Beveling of foundation when using loose filling material		Technical information		
				width:	2648 mm	
				height:	2650 mm	
				length:	3332 mm	
				largest part:	3350 mm	
				weight:	339,3 kg	
				floor space required:	7024 x 6298 mm	
				pipe measurements:	diameter:	wall thickness:
					108 mm	3.2 mm
					33.7 mm	3.2 mm
				metal parts:	steel, galvanized, powder coated RAL 7016 (anthracite grey)	
				metal clamps:	siluminium, powder coated, RAL 5018 (turquoise blue)	
				bolts for metal clamps:	stainless steel, Pin Hex Button Head Security Screws M10	
				composite beam measurements:	Height, width	Lenght
					100 x 100	1500
				max. free fall height:	< 2450 mm	possible underground see DIN 79000:2012-05 Tab.2 or installation instructions
				user height:	> 140 cm	
				maximum user weight:	130 kg	
				certificates:		

